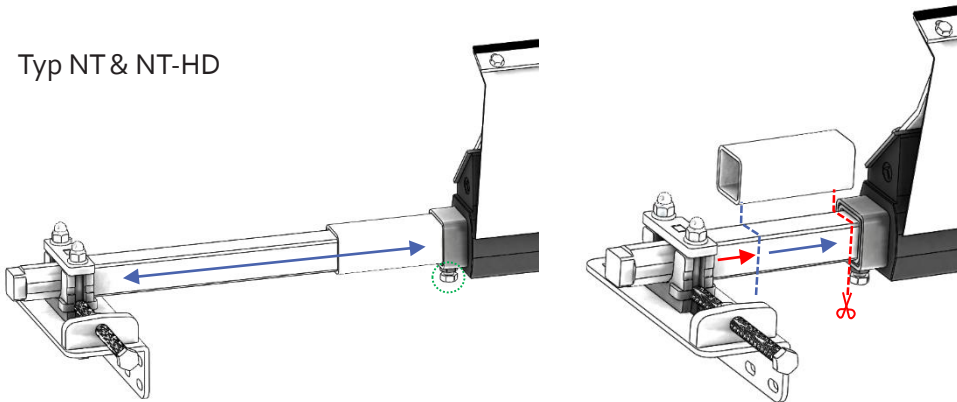


Typ NT

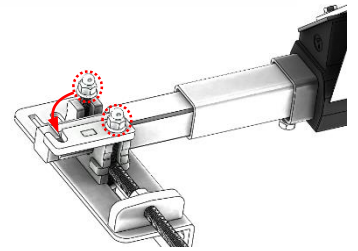
Typ NT-HD

Axes et réglage de la largeur / Axles and width adjustment / Achsen und Breitereinstellung

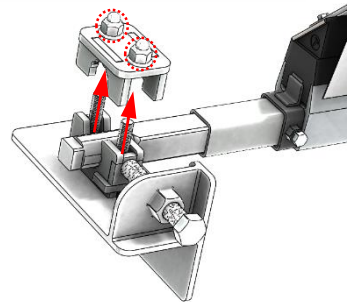
Typ NT & NT-HD



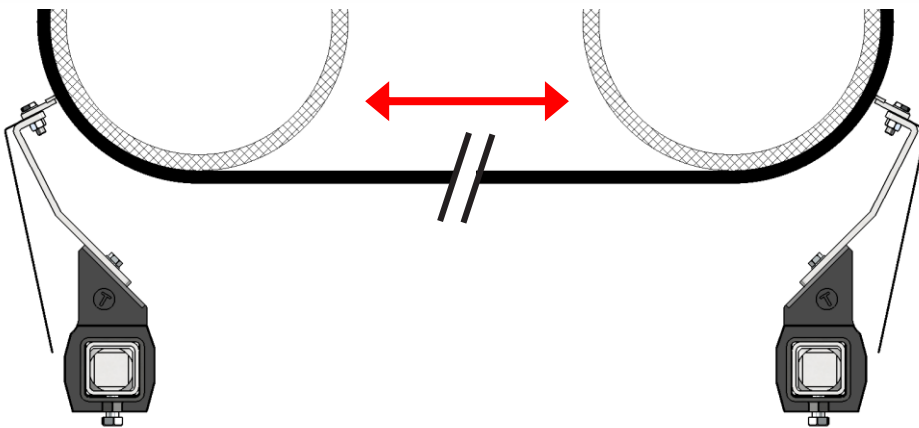
BT / BW / BB < 1600



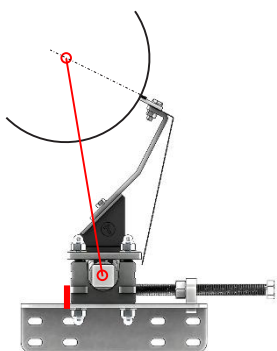
BT / BW / BB ≥ 1600



Bande reversible / 2 Ways belts / Reversierbänder

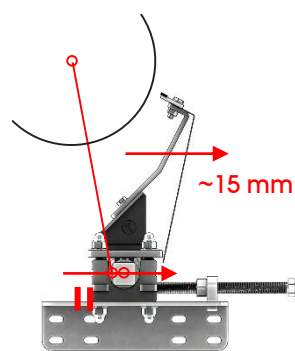


Réglage étape par étape / Adjustment step-by-step / Einstellung Schritt für Schritt



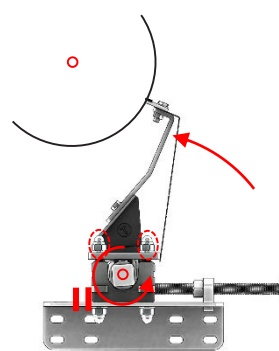
Fixer cornière, ajuster EA
+ faire une marque
Attach bracket, adjust EA
+ make a mark
Winkel befestigen + EA
einstellen + markieren

1



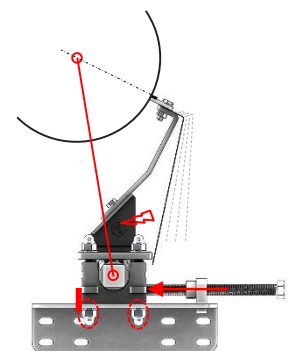
Reculer palier et lame
Back-off bearing and
blade
Schaber und Achshalter
rückwärts fahren

2



Tourner lame sur le
tambour, puis bloquer
axe
Turn blade against drum
and lock the shaft
Schaber gegen Tommel
drehen und Achsen
verriegeln

3



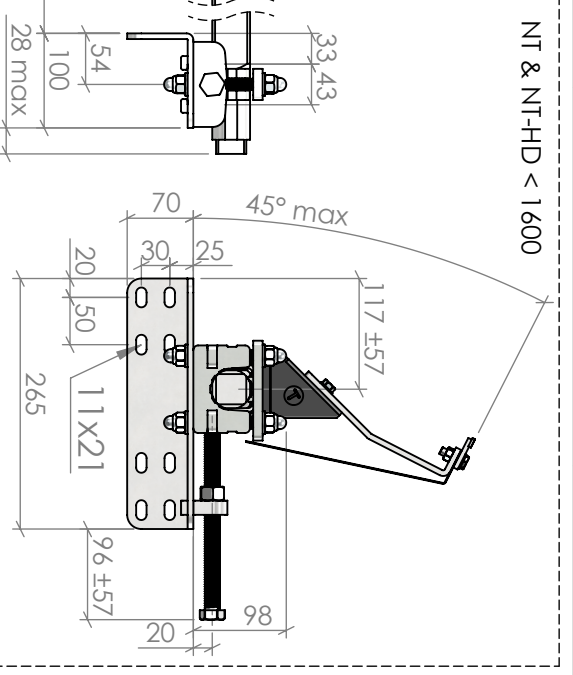
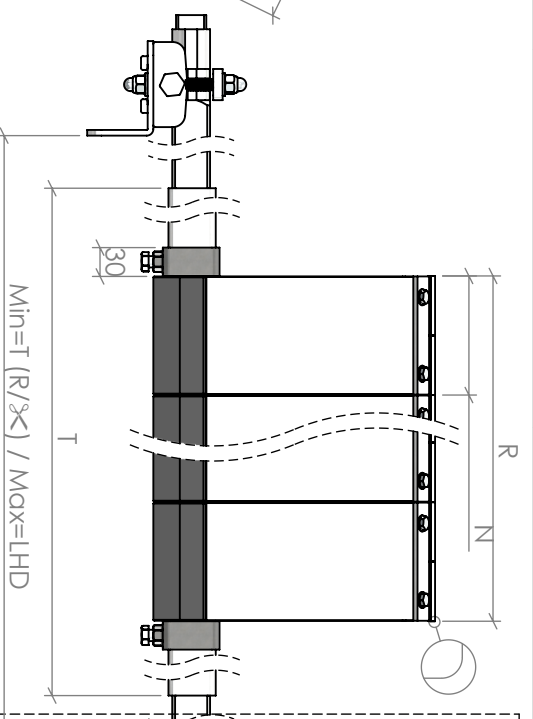
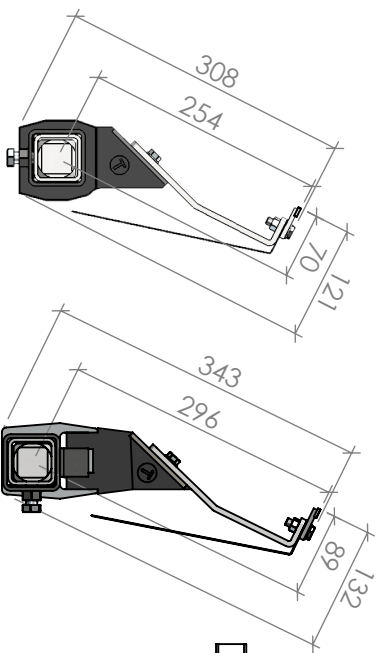
Pousser palier jusqu'à EA
correct, vérifier pression.
Bloquer tout
Push up to good EA,
check pressure. Lock all
Schieben bis korrekten EA,
Druck überprüfen, alles
verriegeln

4

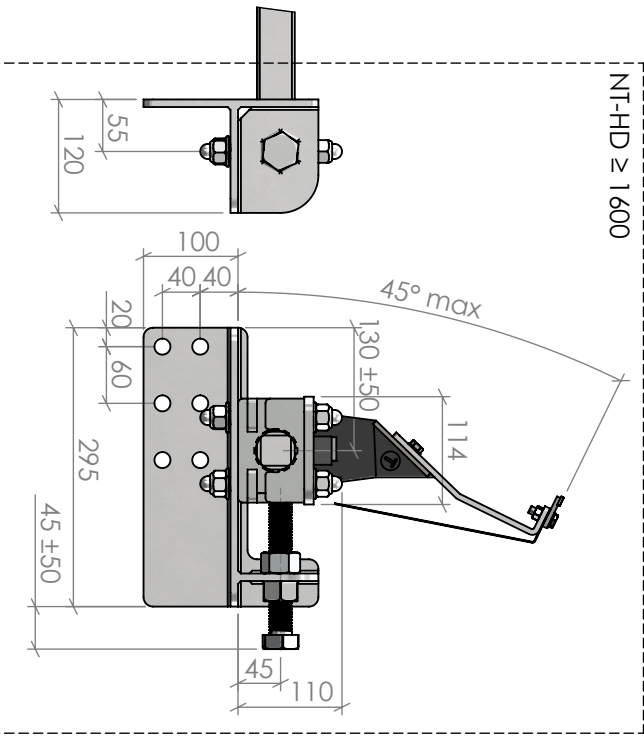
Instructions/Anleitung

Typ NT

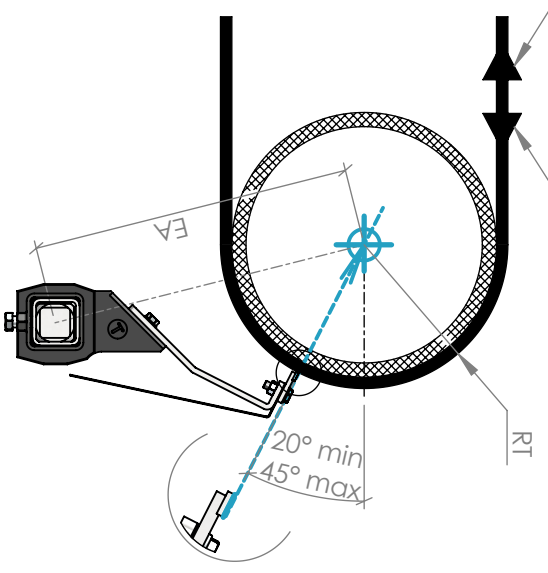
Typ NT-HD



NT-HD ≥ 1600



NT : 2 m/s max
NT-HD: 4 m/s max



NT : EA = $\sqrt{65515 + (RT+70)^2}$

RT	100	125	150	175	200	225	250	275	300	325
EA	308	322	338	355	373	391	410	430	450	471
RT	350	375	400	425	450	475	500	525	550	575
EA	492	514	536	558	580	603	625	648	671	694

NT-HD : EA = $\sqrt{87615 + (RT+89)^2}$

RT	100	125	150	175	200	225	250	275	300	325
EA	352	366	381	397	414	432	451	470	489	509
RT	350	375	400	425	450	475	500	525	550	575
EA	530	551	572	594	615	637	660	682	705	727

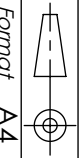
BT/BW/BB	400	500	650	800	1001	1002	1200	1401	1402	1600	1801	1802	2001	2002
N=126	3	4	5	6	7	8	9	10	11	12	13	14	15	16
R	378	504	630	756	882	1008	1134	1260	1386	1512	1638	1764	1890	2016
LHD					1745	1745	1945	2145	2145	2370	2970	2970	3170	3170
T	500	650	800	1000	1000	1200	1400	1600	1600	2000	2000	2200	2200	2200

T°C min/max	-10	+50
pH min/max	4	10

Huile-Öl-Öl



Typ NT / NT-HD



Plan N° 151211 161

Echelle 1:8